

MMS Protocol

This is the procedure for preparing a dose of the MMS dietary supplement, summarized from the writings of Jim Humble - the discoverer of Chlorine Dioxide for internal use. His free e-book of 127 pages can be downloaded by clicking here <http://MiracleMineralSolutions.com/MMS-book1.pdf>

FIRST – Activate a few drops of the Sodium Chlorite solution (MMS).

A one-year supply costs \$20.00 (US) plus shipping at <http://MiracleMineralSolutions.com>.

In a glass mix 1 MMS drop from the original bottle with 5 drops of one of these acids (avoid vitamin C):

unfiltered apple cider vinegar, or
Fresh lemon/lime juice drops, or
citric acid 10% solution

Powdered citric acid in liquid form is one of the preferred acids. It tastes like lemon juice. Mix 1 tablespoon of Citric Acid powder with 9 tablespoons distilled water to make a 10% citric acid solution for use with MMS.



Always use 5 drops of any one of the food acids above to each one drop of MMS. (5 to 1)

SECOND - Wait: Swirl the MMS drops and the acid drops in an empty dry glass, then wait at least 3 minutes after mixing. (3 to 5 minutes is OK – 10 minutes is too long.) The two ingredients combine to produce a substance that can't be stored. It slowly begins to release a gas called Chlorine Dioxide. Carried in water and juice it becomes the detoxifying substance that is carried for some hours by the blood stream.

THIRD – Add Juice and/or Water. Add 1/3 to 2/3 glass of distilled water or juice to the extent needed to mask the slight lemon-like chemical taste. The amount of juice or water is not critical provided no vitamin C is in the juice. After adding the juice or water you can drink it immediately – or wait, but no longer than one hour before drinking because the gas you want is wasting away. Don't use orange juice as the masking agent. Vitamin C neutralizes the desired effect. Carrot juice or beet juice is OK. Some apple and pineapple juices are labeled "nothing added." Avoid taking vitamins containing C for several hours.

FOURTH – Dosage Limits. The protocol for taking MMS starts with one or two drops. Never more at first. People who are very sick and/or sensitive can start with 1/2 drop. It's hard to measure one-half drop. Therefore prepare a one drop mixture, add water, and drink half of it, then drink the other half one hour later. Tolerance develops quickly and nausea is rarely noticed after the first dose.

FIFTH - Drink it. The juice makes the drink palatable – you can drink it without complaint. If you experience no nausea after the first dose, increase by one drop for the 2nd dose – 2 to 8 hours later same day. The Inventor suggested drinking it morning and night. Other directions suggest repeating the drink every one or two hours. It can be your personal choice how rapidly you want the protocol to exhibit results. The more hours that Chlorine Dioxide circulates in your blood stream, the sooner you'll notice beneficial results.



If you experience nausea, reduce the amount of MMS for the next dose. Drink two or more preparations each day, at least one in the morning and one in the evening. Your body quickly develops tolerance for the drink. Increase the number of drops (in step one) by one or two drops as tolerance increases. If nausea develops, back off one or two drops for a day or two, then gradually increase again. The maximum is thought to be 25 drops morning and night but for people who have little body weight, or for children, simply reduce the number of drops proportionately. Same with pets.

SIXTH – Monitor Effectiveness. Continue to increase by one drop each time you take a new dose. When you notice nausea or diarrhea, reduce the dosage by 1 or 2 drops for one day.

Diarrhea, or even vomiting is not a bad sign. The body is throwing off poisons and cleaning them out. Most people report that they feel much better after allowing some cleansing reactions. Don't seek medicine for temporary diarrhea relief. The body is cleaning out unwanted pathogens or deviant cell parts. When poisons are eliminated, diarrhea ceases. After achieving 15 drops twice per day, at that point you can increase to 3 drinks per day temporarily. Stay at 3 drinks per day (each with 15 drops if you can) for at least one week and then reduce the preparations to 4 to 6 drops once a day for adults and 4 to 6 drops twice a week for children. This is called "maintenance mode." Persons weighing under 90 pounds or over 200 pounds should reasonably reduce or increase their dosages, staying just under the nauseous indicator until their systems are cleared. Then maintenance mode begins.

If you purchased the normal four to six ounce bottle of MMS it may or may not last one year depending on how much you use and how much you give away to neighbors or friends.

***** This is a Brief Tribute and Thank You to Jim Humble *****



← Jim Humble mixing and training others who dispensed to thousands of very ill patients in Africa.

Easily 75,000 adults and children were rescued from various diseases. Subsequent medical tests proved that TB, malaria, HIV and parasites were eliminated within two to ten days.

See next page – a letter from one of the African clinics.



In one of the testing programs, permission was given to administer MMS in prisons.

Women prison inmates in the city of Lilongwe, Malawi East Africa keep children with them in prison. They had little hope of medical assistance. Food is sometimes stolen by guards and sold privately.

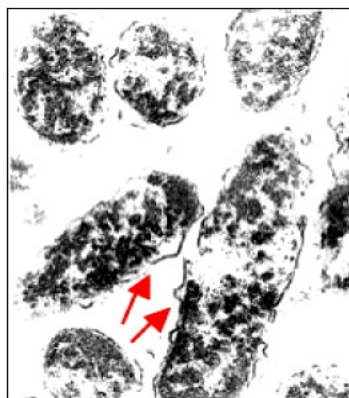
Body temperatures were recorded and a pin-prick blood samples were stored and analyzed for about 40 male and female inmates.

Recovery to normal temperatures occurred typically within two days of treatment. Subsequent blood tests verified the absence of malaria and other viruses.

Pseudomonas bacteria magnified 108,000x



Untreated
Notice intact (smooth) cell walls



Treated with chlorine dioxide
Notice curling of cell walls and coagulating nucleic material.

Aberrant cells, viruses and bacteria are “exploded” when Chlorine Dioxide gas comes in contact with such cell walls. Most pathogens do not breath oxygen. The gas molecule is attracted to these unwanted cells with a powerful pull that effectively “explodes” them.

Body cells are not harmed in any way. The chemistry actually precludes it. Common colds often dry up within two hours it is claimed. Chlorine Dioxide is believed to be the most powerful anti-bacterial agent on the planet.



BALL -  - **WORLD MISSIONS**

EMATSAYI MISSION HEALTH CENTER
P.O. Box 1176, 50100 KAKAMEGA, KENYA Tel No: 0722-300301

February 11, 2004

Jim Humble
The Malaria Solution Foundation

Here I present to you my special observations during the Malaria Campaign using the Malaria Solution Formula.

1- The very 1st day of the introduction a very sick baby of 1 ½ years was brought complaining of convulsions from high fever with temperature of 104 F (40 C). Blood slide microscopic examination was positive of malaria with 4 pluses ++++ indicating very severe infection with malaria falciparum parasites.

After resertation the patient was given the malaria solution phase 1. After 4 hours the blood slide microscopic examination was done. The parasites were reduced to 2 pluses (++) . At that time phase 2 was given (5 drops of the malaria solution). The following day the blood slide was negative of malaria.

Note: No other antimalaria drug was given. No antibiotic was given. After two days the child was discharged. There had been no temperature above normal nor any other symptoms for 48 hours. The malaria had been cured by the Malaria Solution administration alone without the usual quinine for such serious cases.

2- A female patient aged 34 years had persistent fevers sever headaches in evenings, persistent nausea, loss of apatite, and loss of weight. Microscopic examination of blood revealed malaria falciparum parasites present. She had not responded to many antimalaria drugs including quinine injections. Malaria Solution phase 2 was given in two doses within 24 hours. By the third dose all signs and symptoms had reduced. After 5 days the patient was back to work eating well after two months of illness. A check of the blood slide showed negative.

3- Three sick children were administered Malaria Solution after the presence of symptoms of bronchial pneumonia for 2 days. After 6 hours the signs and symptoms had reduced. They stayed in the ward for 48 hours until the symptoms of pneumonia were completely gone. No other antibodies were administered.

4- I smeared the Malaria Solution to warts in the groin region of a male patient of 5 years. Within 5 days the warts were gone.

Examples of Sodium Chlorite and acid-activator packaged for external body use. Many such items have been available for over 50 years.



[Click to enlarge](#)